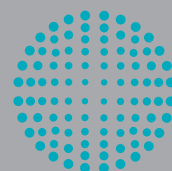




R&D press with small footprint

# 52i

[www.fette-compacting.com](http://www.fette-compacting.com)



**FETTE  
COMPACTING**  
be efficient

# Mobile galenic press



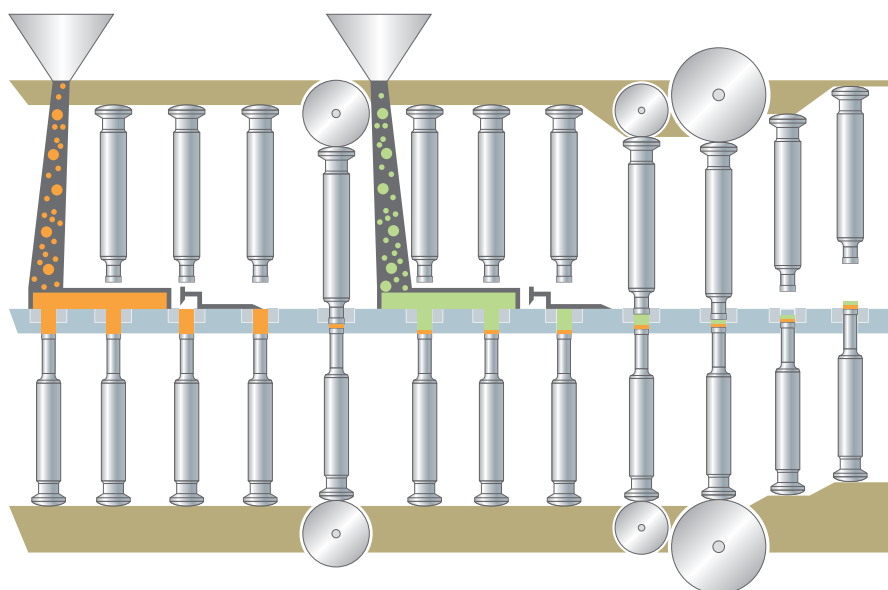
# R&D tablet press

The 52i offers highly innovative technology on a small footprint. The press is absolutely mobile and connected to state-of-the-art analytic software on an industrial computer.

The simple and easy cleaning of the machine leads to a high availability. Precise up-scaling minimizes the need to press test charges on production machines. Due to its GMP-approved construction and easy to handle validation the 52i is the perfect solution for the production of small batches and clinical charges.

TECHNICAL DATA	52i T				52i M			
	B-10	D-8	B/D-4	FlexAdapt X-8	B-20	D-16	B/D-8	FlexAdapt X-16
Max. tablet diameter	16 mm	25 mm	16/25 mm	25 mm	16 mm	22 mm	16/25 mm	25 mm
Number of punch stations	10	8	4/4	8	20	16	8/8	16
Punch type	B-30.16	D-38.1	B/D	BBS/BB/B/D	B-30.16	D-38.1	B/D	BBS/BB/B/D
Max. fill depth	20 mm				20 mm			
Max. pre-compression	5(10) kN				20 kN			
Max. main-compression	60 kN				60 kN			
Upper punch penetration	2–4 mm				2–4 mm			
Pitch circle diameter	130 mm				230 mm			
Max. output (tabs/h)	42,000	33,600	16,800	33,600	108,000	86,400	3 8,400	86,400
Power supply	3.0 KW				2.5 KW			
Weight	440 Kg				950 Kg			
Dimensions/mm (L x W x H)	1,197 x 600 x 1,606				1,465 x 800 x 1,805			

# 52i Bi-layer



TECHNICAL DATA	52i			
	B-20	D-16	B/D-8	FlexAdapt X-16
Max. tablet diameter	16 mm	25 mm	16/25 mm	25 mm
Number of punch stations	20	16	8/8	16
Punch type	B-30.16	D-38.1*	B/D	BBS/BB/B/D
Max. fill depth (1./-2. layer)	20/10 mm			
Max. pre-compression 1st layer	10 kN			
Max. pre-compression 2nd layer	10 kN			
Max. main compression 2nd layer	60(80) kN			
Upper punch penetration	2–4 mm			
Pitch circle diameter	230 mm			
Max. output (tabs/h)*	60,000	48,000	24,000	48,000
Power supply	2.5 kW			
Weight	950 Kg			
Dimensions/mm (L x W x H)	1,465 x 800 x 1,805			

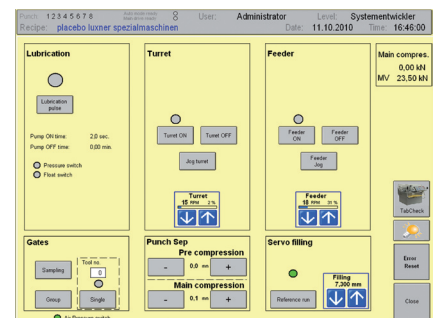
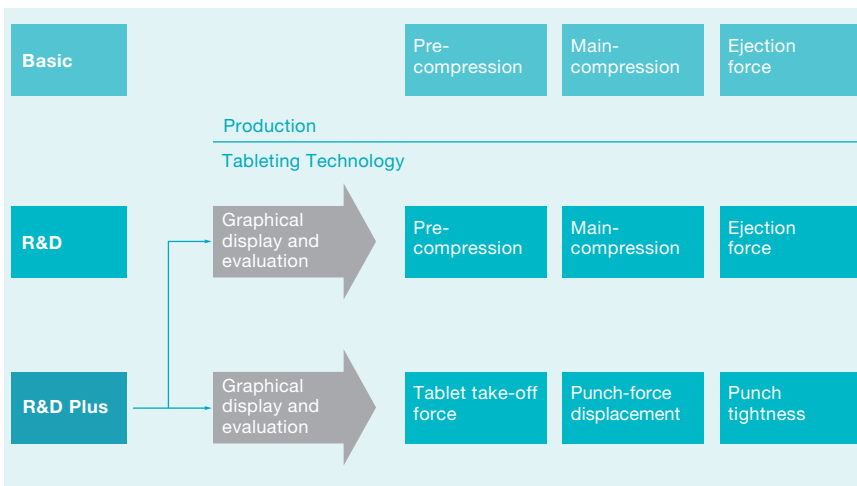
\* Bi-layer

# Galenic software

The modular software design allows easy upgrading from R&D to R&D Plus functionality. A modern industrial PC system with a 15" touch screen display ensures a brilliant and clear display of all evaluation graphics and statistics.

The big number of instruments allows an almost ideal simulation of production presses at laboratory size.

- Pre compression measurement
- Main compression measurement
- Ejection force measurement
- Way-force-graphics
- 21 CFR part 11 compliant



**Basic:** Predominantly used during production processes, with fully automatic regulation of powder dosing through compression force and adjusting of the rotations per minute of the die table, optional regulation of tablet hardness.

**R&D:** The basic package for galenic R&D purposes includes the graphical display of the measurement results, e.g. pre-compression, main-compression, ejection force.

**R&D Plus:** In addition to the functions of "Basic" and "R&D" the "R&D Plus" -package includes the analysis and visualization of all available additional instruments and the display of the way-force diagram. Upgrade from "R&D" to "R&D Plus" is always possible.

**Fette Compacting GmbH**

Grabauer Strasse 24  
21493 Schwarzenbek  
Germany  
Phone +49 4151/12-0  
Fax +49 4151/3797  
tablet@fette-compacting.com

**Fette Compacting America, Inc.**

400 Forge Way  
Rockaway N.J. 07866  
USA  
Phone +1 973-5868722  
Fax +1 973-5860450  
sales@fetteamerica.com

**Fette Compacting America Latina Ltda.**

Av. Cambacica, 1200 módulo 10  
Parque Imperador  
CEP 13097-104  
Campinas /SP – Brazil  
Phone/Fax +55 19 3262 1900  
contato@fette-compacting.com.br

**Fette Compacting Nanjing Machinery Co., Ltd.**

8 Phoenix Road Jiangning Development Zone  
211100 Nanjing  
China  
Phone +86 25 52121818  
Fax +86 25 52129951  
info@fette-compacting.com

**Fette Compacting Machinery India Private Limited**

Regd Office:  
Old No 14, New No 29, IInd Main Road,  
Gandhinagar, Adyar, Chennai – 600 020  
India  
Phone +91 44 24405136/37  
Fax +91 44 42337704  
sales@fette-compacting.in

Competence Centre:  
Plot No S 115, Phase III B  
Verna Industrial Estate  
Verna, Goa 403 722  
India

**Fette Compacting Asia Pacific Pte Ltd**

1 Kim Seng Promenade #14-04  
Great World City East Tower  
Singapore 237994  
Phone +65 6734 3001  
Fax +65 6734 8412  
infoasiapacific@fette-compacting.com

[www.fette-compacting.com](http://www.fette-compacting.com)



**FETTE  
COMPACTING**  
be efficient